

DECOTILE COLLECTION

Wood Vinyl Plank - Korea



Marketed by



www.egofloor.com



AN ADDRESS TO **THE BEST** EXPERIENCE

Ego floors introduce new Wood Vinyl Plank with exclusive tie-up with LG Hausys - Korea. LG is the world's largest resilient flooring manufacturers and has various product line-ups. They have striven to meet the specific technology and design requirements for any project by developing flooring solutions that go beyond elegant interior design. They are engineered to address performance needs of residential and commercial markets.

LG Hausys products have been certified for its international quality assurance.

Wood Vinyl Plank is an easy-to-install resilient flooring option that works in a variety of areas and realistically mimics natural materials such as woods, stones, metals and original graphic designs. These floors are highly fashionable with maximum comfort and bring you the best in design and technology.

Wood Vinyl Plank is available in many attractive wooden designs in easy to install vinyl planks. Easy maintenance with only soap and water ensures that the product retains its original look throughout its lifetime.

Also with enhanced underfoot comfort and increased sound insulation properties. The product is good for peaceful residential settings.

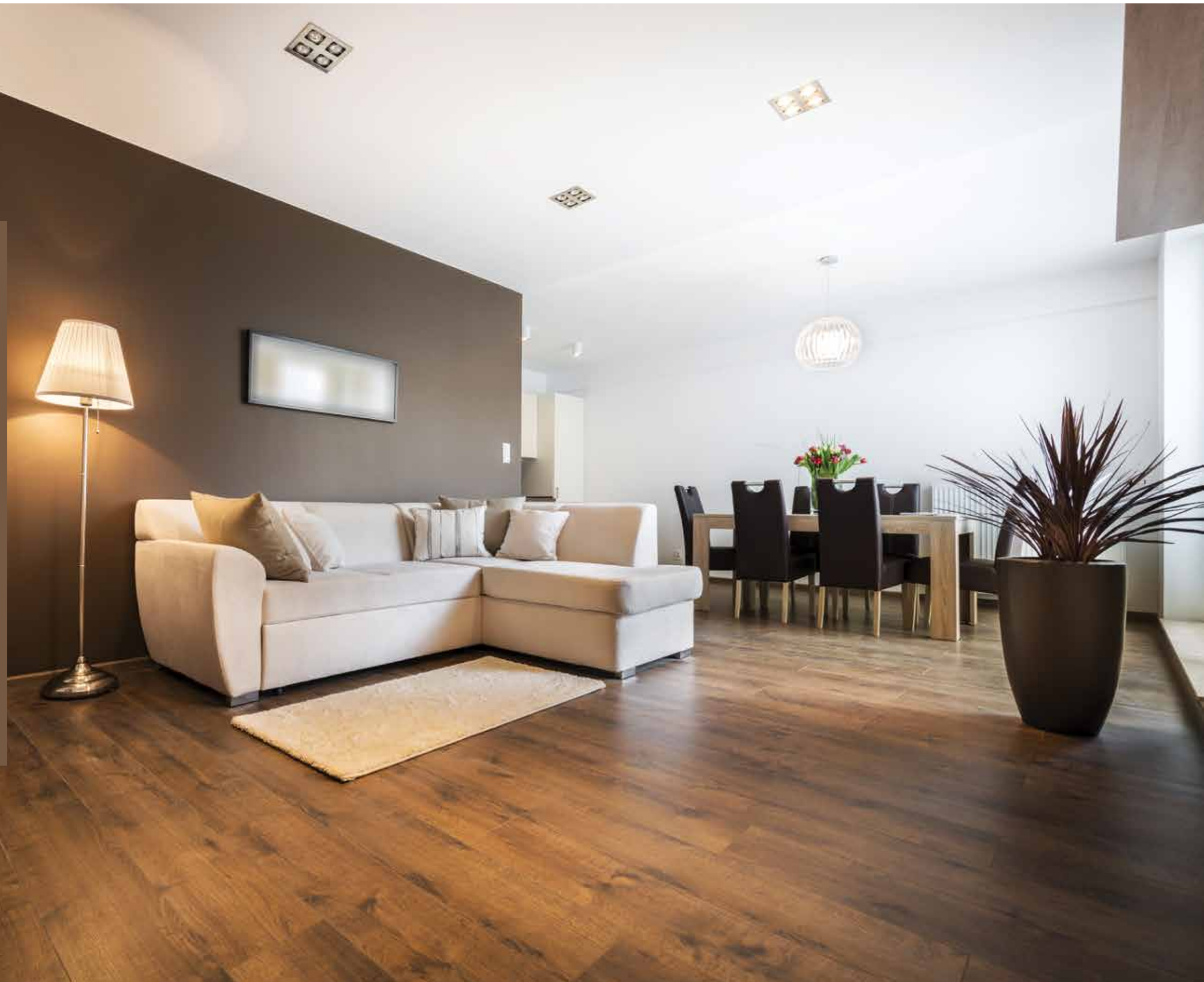
Wood Vinyl Plank is Eco-friendly material which delivers system and solution that maximize energy efficiency.

DECOTILE COLLECTION

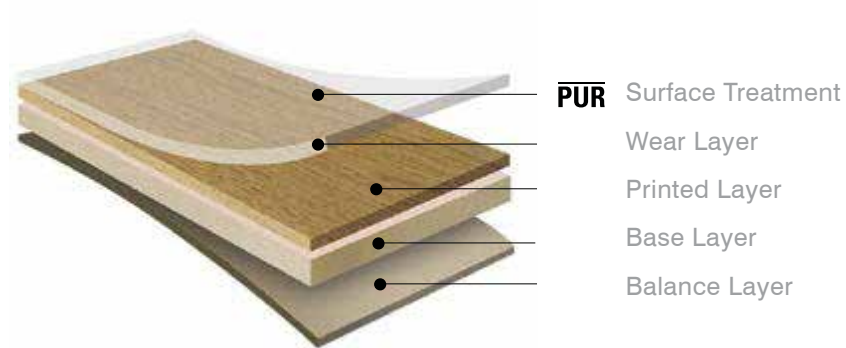
by

 LG Hausys

Luxury Vinyl flooring is a fashionable, high-tech floor covering that offers outstanding advantages to our style, quality, and budget-conscious customers. There have been amazing advancements in vinyl flooring in quality, design and durability. Everyone loves the look of hard-surface floors. Wood, for example, is beautiful and comfortable, conveying a natural, easy luxury. Tile and stone floors have the same appeal. Luxury Vinyl is available in a large selection of designs, colors, and textures. These floors are moisture resistant, impervious to most stains, and very easy to clean. Heavy traffic is no problem because these floors can handle lots of activity. Luxury vinyl is soft and keeps a constant temperature in all seasons, so it's comfortable to walk on barefoot. It can even ease long periods of standing, making it a great option for the kitchen.



STRUCTURE



TECHNICAL DATA

CHARACTERISTIC	STANDARD	UNIT	DECOTILE
		T	2.0
		W/L(mm)	0.3
Type Of Flooring	EN ISO 10582		PVC heterogeneous
Surface Treatment			PUR
Size	EN ISO 24342	%	≤ 0.15
Straightness & Squareness		%	≤ 0.35
Classification	EN 685		Class 23/31
Over All Thickness	EN ISO 24346	mm	2.0
Wear Layer Thickness	EN ISO 24340	mm	0.3
Wear Resistance	EN 660-2		T
Residual Indentation	EN ISO 24343-1	mm	≤ 0.1
Dimensional Stability	EN ISO 23999	%	≤ 0.25
Curling		mm	≤ 2
Color Fastness To Light	EN ISO 105-B02		≥ 6
Castor Chair Test No	EN ISO 4918		No Change
Burning Characteristic	EN 13501-1		Bfl-s1
Chemical Resistance	EN ISO 26987		No Change
Slip Resistance	EN 13893		Class DS
	DIN 51130		R9
Warranty			
Guarantee for manufacturing defects and wear-out*			7 Years

+ Warranty is valid only when installed in accordance with LG Hausys's Installation & Maintenance guide.

FEATURES



Eco & Human-friendly Product

- FloorScore® and DIBt certified for low VOCs.
- Phthalate Free (DEHP, DBP, BBP, DINP, DIDP, DNOP) & Heavy Metal Free (Cd, Pb, Hg, Cr6+)
- Made from safer, stronger raw materials



Excellence in Design

- 15 styles available in natural and modern color palette
- High-resolution imaging and patterns for realistic wood visuals
- New tile visuals that mirror woven patterns



Durable Technology

- PUR double coating improves resistance to scratches and stains
- Quality assured by warranties

APPLICATIONS

HEALTHCARE FACILITIES	SCHOOL	OFFICES	HOTELS & RESTAURANTS	RETAIL
Applicability	Corridors	Corridors	Receptions	Boutiques
Corridors	Classrooms	Office Rooms	Corridors	Shops
Consulting Rooms	Computer Laboratories	Conference Halls	Dressing Rooms	Department Stores
General Surgeries	Teachers's Rooms	Bathrooms, Lavatories	Guest Rooms	
Waiting Rooms	Common Rooms		Restaurants, Cafeterias	
Patient's Room	Libraries		Kitchens	
Office Rooms	Office Rooms		Fitness Gyms	
Laboratories	Laboratories			
Operating Theatres	Dormitories			
Rehabilitation Rooms	Gymnasiums			
Mri,Ct Scan,Lazer Surgeries				

AMERICAN OAK



MOUNTAIN PINE



HERITAGE HICKORY



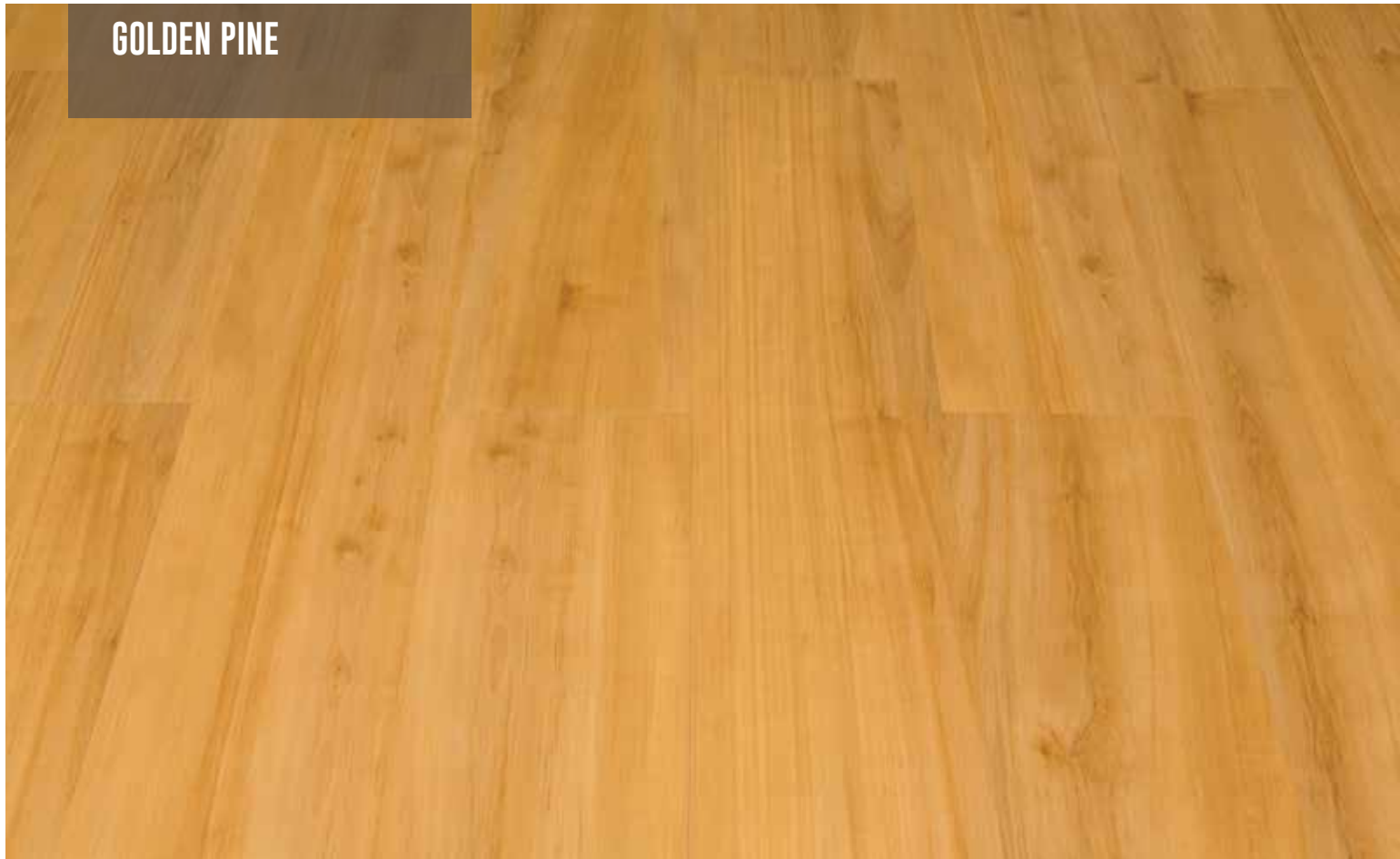
CLASSIC HICKORY



ITALIAN WALNUT



GOLDEN PINE



HONEY CLASSIC



ETHNIC PINE



SENSATION PINE



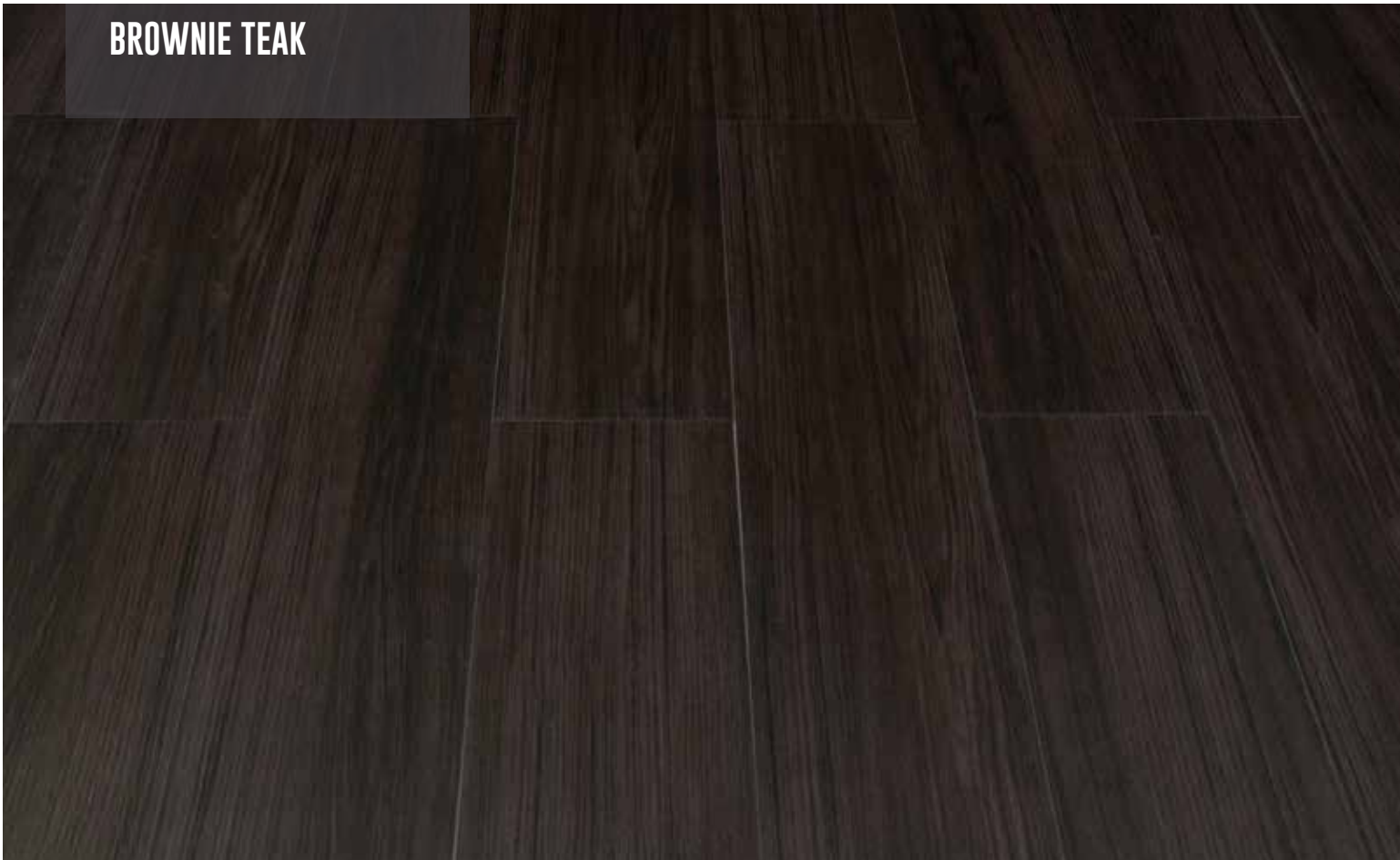
LEGO BLOCK PINE



MOSCADO PINE



BROWNIE TEAK



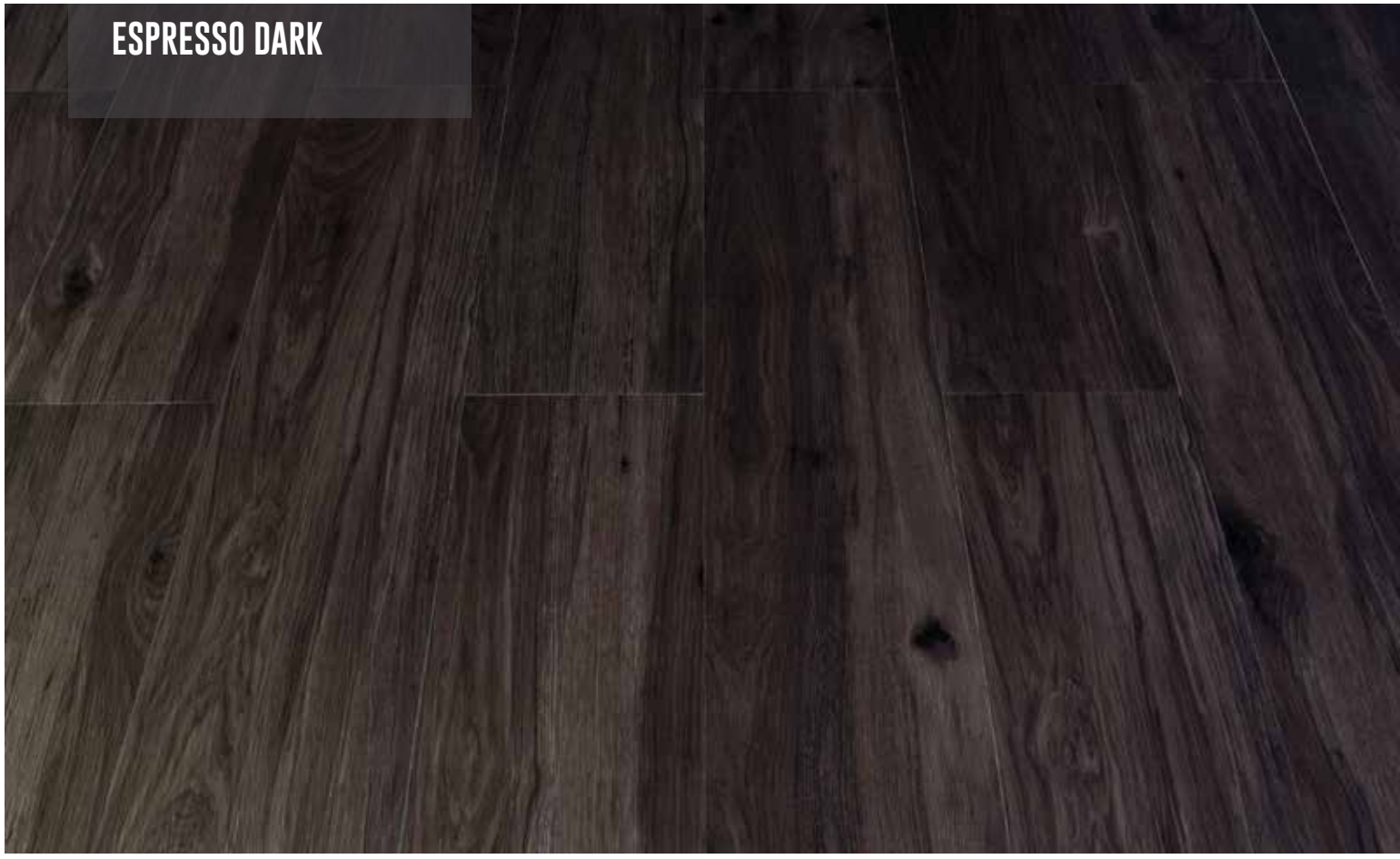
BLEACHED PINE



AGED PINE



ESPRESSO DARK



▶ 1. BASIC REQUIREMENTS

Flooring must be installed at the final stage in any type of construction. Allow enough time for adhesive to cure. Keep foot traffic off of the floor for at least 24 hours.

2. MEASURING

Installation inspection such as quantity, color, design, etc. must be checked and confirmed prior to installation.

3. ROOM TEMPERATURE

Flooring materials, adhesive and room temperature must be maintained from 60°F to 75°F (18°C ~ 25°C) for at least 24 hours before, during and after the installation.

CONDITIONS AND PREPARATION OF SUB-FLOOR BASIC CONDITIONS

Any defects found in concrete substrates must be corrected. Newly installed concrete substrates contain excessive moisture residues. Ideal time for the moisture residue to dry completely is 28 days / millimeter (1day / inch). Usually the thickness of the concrete slab is set to 50cm (20"). Moisture dissipation time can depend upon thickness of the slab and other external conditions. Substrates must be smooth and dry enough to receive resilient flooring.

MOISTURE

Moisture test must be performed for both new and existing concrete before installation. Recommend measuring moisture using by apparatus for measuring humidity. (Maker : Kett, Grade: HI-520). Moisture test result should be less than 5.0%.

START OF INSTALLATION - PLANKS

- When using planks from two or more cartons, check to be sure all pattern and lot numbers are the same to ensure proper color match.
- Products with directional arrows on the back should be installed with the arrows all pointing in the same direction unless you are installing custom layouts.
- Before installing the material, plan the layout so plank joints fall at least 6 inches (15 cm) away from subfloor and underlayment joints.
- Find the center point in the room. Divide the room into equal quadrants by marking two perpendicular lines on the subfloor intersecting at the center point. Depending on your layout you may also start your row along a wall.
- Since walls are not always straight, snap a chalk line. Do not install over expansion joints.

STEP

1. Apply adhesive with the recommended trowel and allow to dry to the touch before installing floor. Don't install in wet adhesive. Only spread as much adhesive as you can cover within 2 hours depending on temperature and humidity.
2. Install all planks/tiles with directional arrows pointing in the same direction. Install the field area first.
3. Apply adhesive as noted in Step 1 to the remaining portion of the room, allow adhesive to dry and complete the installation.
4. Roll the installed flooring in four directions within 30 minutes after completing installation using a 100 lb. roller (45 kg.) (Minimum).

▶ POST INSTALLATION CARE

- Remove dirt and other foreign materials. Adhesive residues must be removed immediately with damp mop or cloth.
- If the adhesive has already cured, remove them using mineral spirits or denatured alcohol on a clean, white cloth.
- Newly installed flooring must not have foot traffic for at least 24 - 48 hours.
- Do not clean the floor during this time. Minimize foot traffic.
- Water cleaning may cause notable decrease in adhesion strength.
- Placing furniture or heavy objects within 24 hours after the installation may leave permanent indentations on the floor surface.

CAUTION

Wet floors can cause accidents. Slippery floors due to improper maintenance may cause slip and fall accidents. Use a hand roller under toe kicks and other hard to get areas. Immediately remove any excess adhesive from the surface of the flooring using a clean white cloth dampened with a neutral detergent and water or with alcohol.

NOTE: Drying time will vary depending on substrate porosity and ambient temperature and humidity.

PRECATIONS: Planks/tiles may be walked on immediately; however, the floor should be protected with plywood when moving heavy furniture and appliances back into the room.

DO NOT wash or scrub the new flooring for at least 5 days after the installation. This will allow planks/tiles to become "seated" in the adhesive and prevent excess moisture from interfering with the adhesive bond.

▶ **DO'S**

- Remove dirt and other foreign materials thoroughly with vacuum or broom.
- Damp mop the floor, being careful not to flood the floor with excess water.
- Stubborn areas should be allowed to soak for 5~10 minutes then have the excess moisture mopped off of the floor.
- Damp mop with a rinse pad. Soak the rinse residues completely and wait until it dries.
- Use only buffing and cleaning pads recommended by Ego Floor. Using strong abrasive pad that are too strong will result in excessive scratching and reduce the life of the floor.
- Use WALK OFF MATS on the floor to protect from soil or dirt. Controlling grit and soil is absolutely crucial to prolonging the attractive appearance of your Ego - LG HAUSYS floor
- Attempt to protect the floor from direct sunlight.
- When moving furniture or heavy objects, protect the floor by laying plywood.
- Use proper floor protectors for portable furniture like wheel chairs, carts, etc., use large diameter wheels.
- Normal soap or dishwasher detergent can cause permanent damage and slippery floors. Use only proper cleaners for resilient flooring.
- When cleaning the floor, post pedestrian warning signs until the floor are completely dry.

DON'TS

- Do not mop the floor with oil base solutions or sealer compound detergents
- Furniture wax or window cleaner may cause slippery conditions. Do not spill cleaning compounds on the floor.
- Do not use aerosol insecticide, vermicide, perfume that contain oil or other solutions can make flooring slippery when it spills on the floor. Some chemical compounds like this may cause permanent damage to the floor.



▶ **LOBACARE - FLOOR CARE & FLOOR CARE MATT**

Product description:

Ready to use acrylate dispersion. Protects finished and water-proof surfaces through a care layer from minor scratches and wear marks. Prevents premature wear and increases the lifetime actively. Enhances old dulled floors optically and brings new shine on floors.

Range of Use:

For finished hardwood, cork, linoleum, PVC surfaces as well as unglazed stone and other water proof surfaces. Floor Care glossy has a good resistant to alcohol and disinfectants.



▶ **LOBACARE - CARE CLEANER**

Product Description:

Highly concentrated wipe care product. Cleans and protects finished parquet, cork and many other types of flooring. The coefficient of friction for sport floorings acc. To DIN 18032 is being preserved. Increases the slip resistance.

Range of Use:

Wipe-over care product for the maintenance of finished Parquet, Hardwood, PVC, CV, Polyolefin, Cork, Linoleum, Rubber, Natural and Artificial Stone.



▶ **LOBACARE - CLEANFIX AND REFILL**

Product Description:

Floor - cleaner to spray for quick and easy maintenance - cleanings. Cleans hygienically and dries without streaks.

Range of Use:

Suitable for varnished parquet and cork floorings, PVC, polyolefine, linoleum, rubber floorings as well as stone and tiles, CV and laminate.



▶ **LOBACARE - CLEANING SET**

Professional quality Cleaning Kit for Wood and cork floors.

Also great for Laminate, Vinyl, PVC, Linoleum, Rubber, Tile and Stone floors. LOBACARE cleaning Kit made in GERMANY - Contains enough LOBACARE Hardwood Floor Cleaner and LOBACARE Refill Concentrate for more than 25,000 sq ft.

- Easily cleans dirt and spills
- Easy to use: sweep or vacuum, spray and mop
- Environmentally friendly and pH neutral
- No streaks or residue

HEAD OFFICE:
Mumbai | Tel : +91 22 66847500 | Customer Care : +91 9699577500
Email : sales@egofloor.com | Website : www.egofloor.com

